

AWB ASCOM Filter Wheel Control Help

©Keith Ehren 2018

Table of Contents

1	Introduction	2
1.1	About AWB ASCOM Filter Wheel Control	2
2	Running the application	3
3	Menu Options.....	7
3.1	Minimize View	7
3.2	Auto Colours	7
3.3	ASCOM Information	8
3.4	Help	8
4	Further Information.....	9

1 Introduction

1.1 About AWB ASCOM Filter Wheel Control

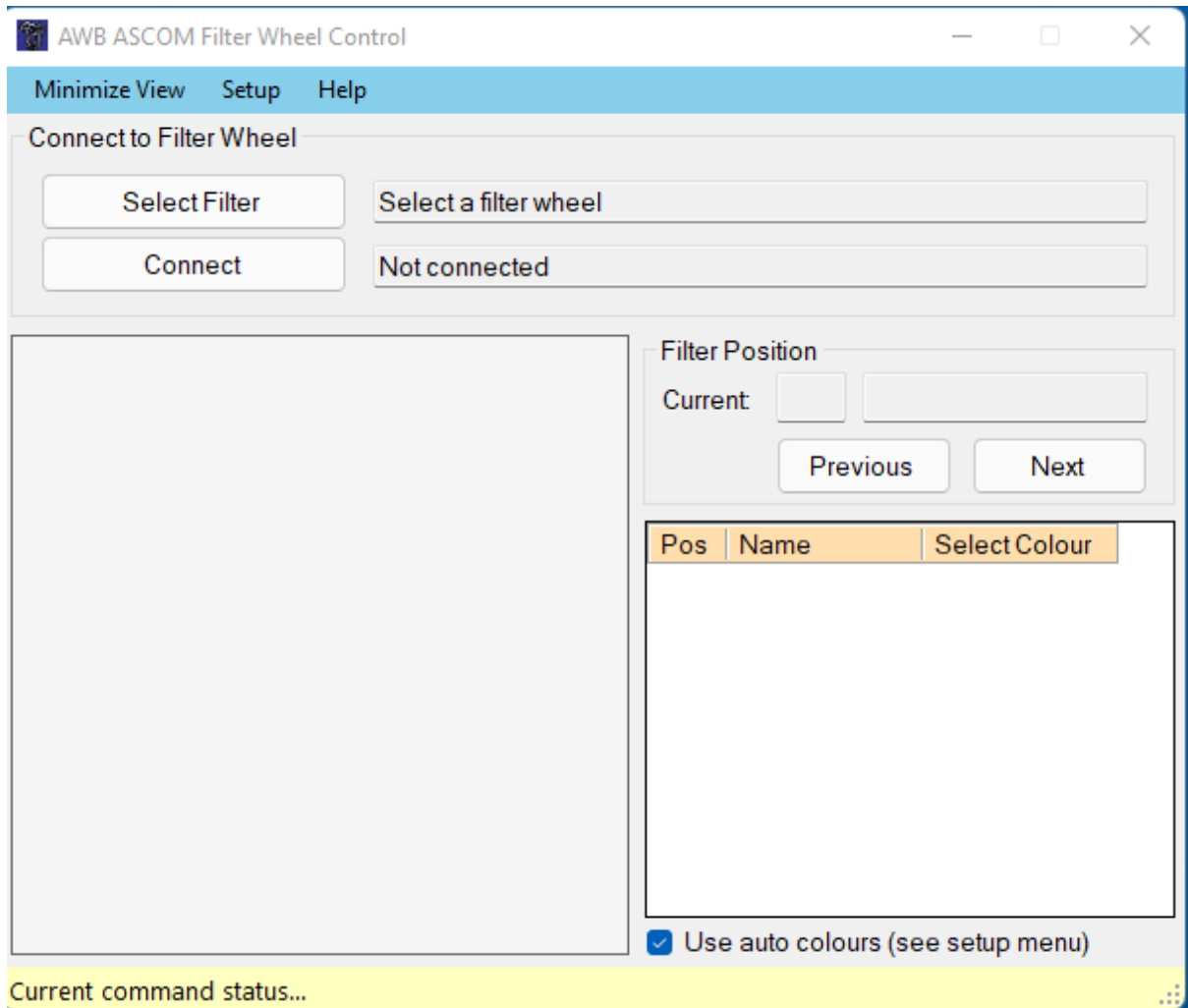
The *AWB ASCOM Filter Wheel Control* is one of a set of applications under my AstroWorkBench (AWB) collection that I use during my observational sessions.

I wrote this software to control my ZWO Electronic Filter Wheel (EFW) using the ASCOM driver supplied on the CD with the filter wheel. It should work with any ASCOM compliant Filter Wheel once the associated driver has been installed.

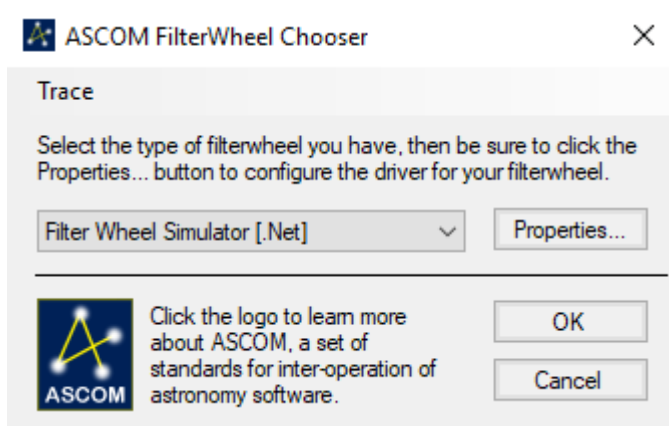
For more details about my other AWB applications and general stuff about me and various articles see my website www.astroworkbench.co.uk.

2 Running the application

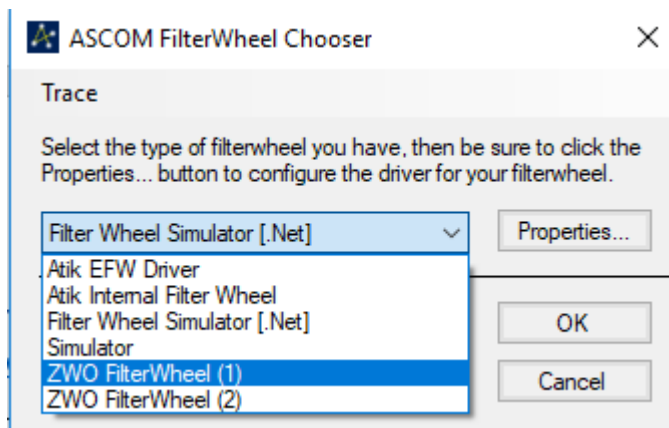
Upon starting the application, you will be presented with the following screen:



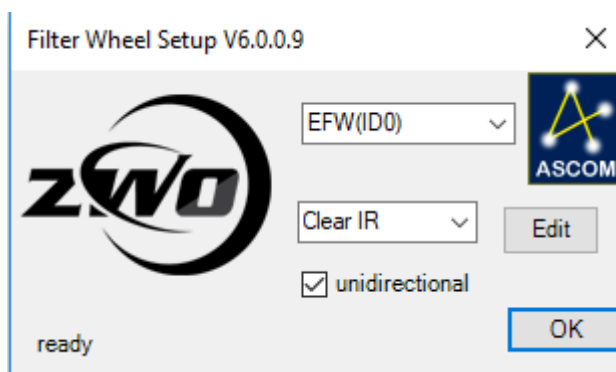
Click on the *Select Filter* button and you will be presented with the following ASCOM screen:



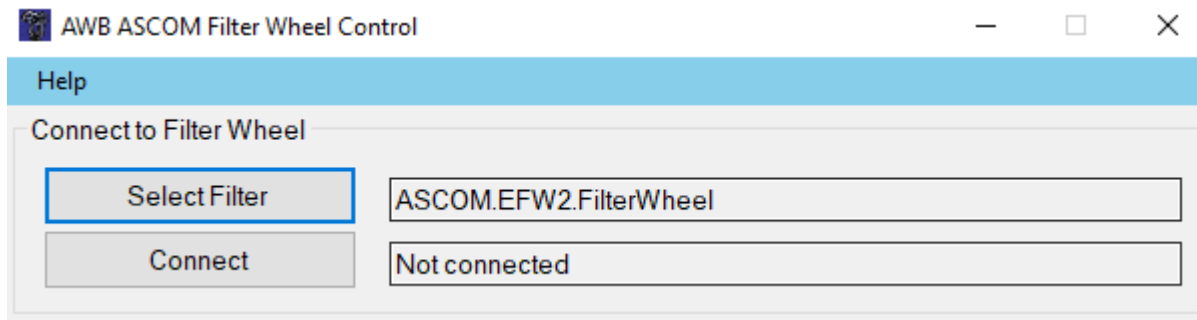
The options available in the drop-down box will depend upon which ASCOM drivers you have installed, for example:



In this example, I select the ZWO filter wheel and then click on the *Properties* button, which presents another ASCOM screen **if you have the associated filter wheel connected** (otherwise an error will be reported). The nature of this screen depends upon the manufacturer but it will allow you to set some properties of your filter wheel.

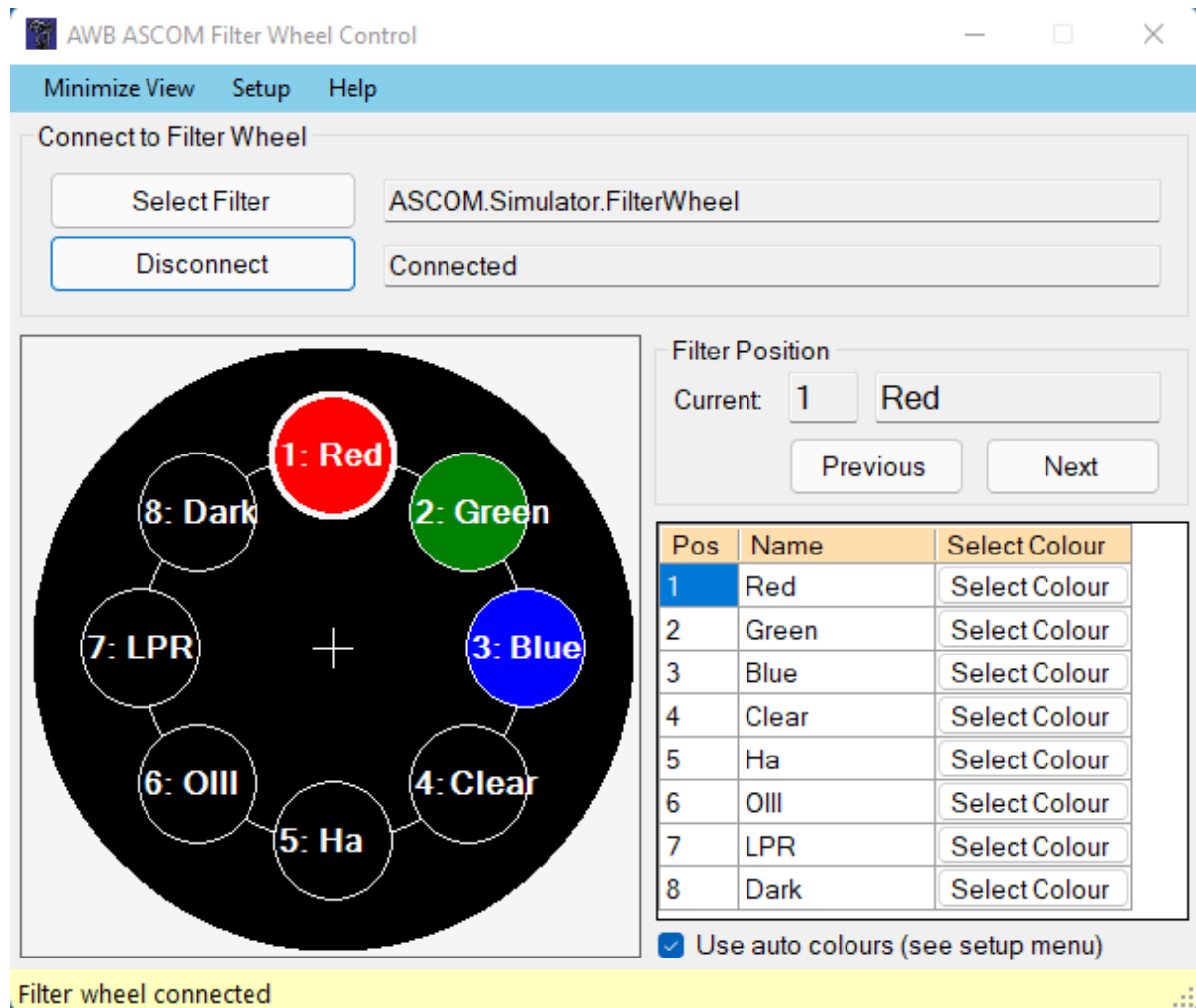


Next click on the OK button, and control will return to the *AWB ASCOM Filter Wheel Control* application with the selected filter wheel displayed, as in the example below:



Next click on the *Connect* button. Upon successful connection the screen will be populated based upon the number of filter position the wheel supports and any labels you have set up in the previous ASCOM Properties screen.

An example is shown below:



The colours may be changed by using the *Setup->Auto Colours* menu option or by clicking the *Select Colour* buttons and selecting any appropriate colour.

To control the filter wheel, it is just a simple case of clicking the *Next* and *Previous* buttons. The example below shows the filter wheel having been advanced by two places to blue.

AWB ASCOM Filter Wheel Control

Minimize View Setup Help

Connect to Filter Wheel

Select Filter ASCOM.Simulator.FilterWheel

Disconnect Connected

Filter Position

Current: 3 Blue

Previous Next

Pos	Name	Select Colour
1	Red	Select Colour
2	Green	Select Colour
3	Blue	Select Colour
4	Clear	Select Colour
5	Ha	Select Colour
6	OIII	Select Colour
7	LPR	Select Colour
8	Dark	Select Colour

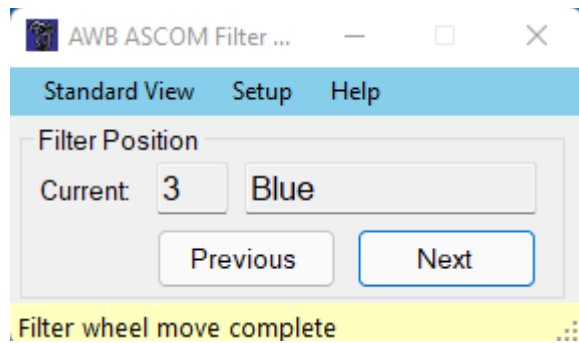
Use auto colours (see setup menu)

Filter wheel move complete

3 Menu Options

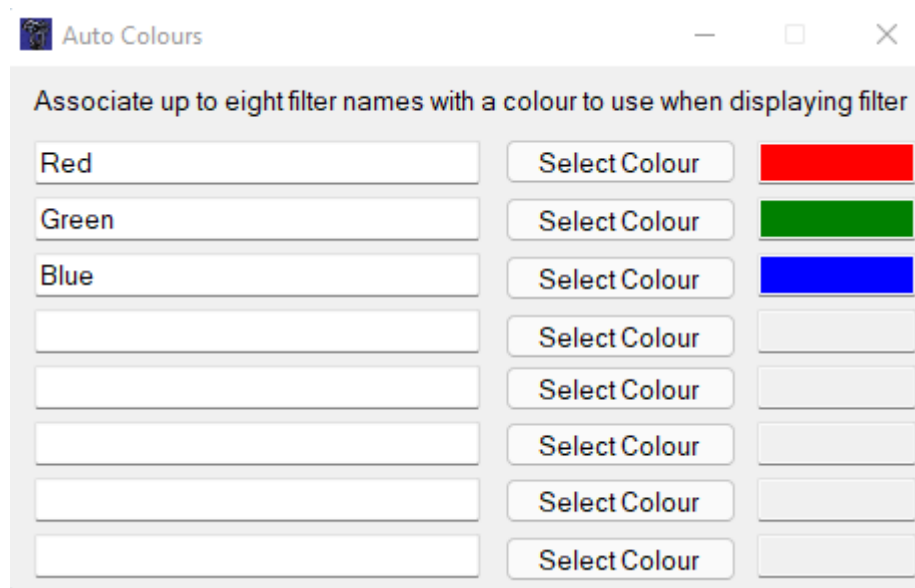
3.1 Minimize View

The **minimize view** menu option toggles the screen size from the full size as shown above to a more minimalist viws as follows:



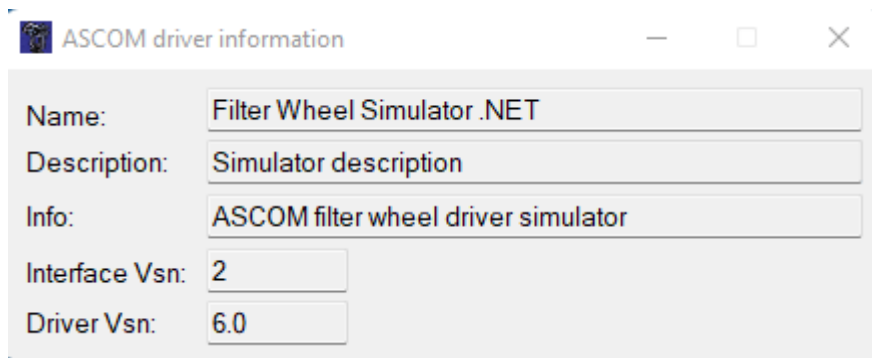
3.2 Auto Colours

The *Setup->Auto Colours* menu option presents the following screen which allows for eight filter names to be entered with a selected colour. If the *use auto colours* checkbox is checked on the main screen then the filter with the corresponding name will be displayed in the associated colour.



3.3 ASCOM Information

The *Setup->ASCOM* driver information menu option presents the following screen which provides some information about the ASCOM driver being used. For example:



3.4 Help

The help menu provides access to:

- This help file;
- My AstroWorkBench web site;
- The version of the application.

4 Further Information

Please visit my website www.astroworkbench.co.uk for further applications, documents and articles.

If you find this application helpful then please consider donating a beer token of £1 via my PayPal account – please see my website www.astroworkbench.co.uk for details.

Thanks.

Keith.